



LAUREOLA INDUSTRIES

WIRE ROPE

AND

FITTINGS



Contact Us



@laureolaindustries
sales@laureolaindustries.com
+1-877-335-7779



LAUREOLA INDUSTRIES

TABLE OF CONTENT

Wire Rope & Fittings

About Us	<u>3</u>
Wire Rope Construction	<u>4</u>
Aircraft Cables	<u>5 - 9</u>
Swage Sleeves	<u>10 - 11</u>
Thimbles	<u>12</u>
Wire Rope Clip	<u>13 - 14</u>
Snap Hook With Eye	<u>15</u>
Turnbuckle	<u>16 - 17</u>
Lighting Safety Cable	<u>18</u>

Trucking and Tie-Down

Polyester Round Sling	<u>20</u>
Blue Eye Web Sling	<u>21</u>
Load Binder	<u>22</u>
Tie-down Chain	<u>23</u>
Ratchet Strap	<u>24 - 25</u>
Contact Us	<u>26</u>



LAUREOLA INDUSTRIES

ABOUT US

Since 2006, Laureola Industries has proudly established itself as a leading provider of Aircraft Cables, Wire Ropes, and Rigging Supplies. Our reputation began with delivering premium suspension parts and cables to OEM manufacturers, and as we've grown, so has our commitment to meeting the evolving needs of our customers. Today, we offer a wide range of Rigging Hardware, Custom Cable Assemblies, and have expanded our offerings to include a dedicated category for Trucking and Tie-Down Solutions.

Our Mission is to deliver superior-quality wire rope, rigging, and trucking solutions that empower industries worldwide to work safer, smarter, and more efficiently. We are committed to providing reliable products, exceptional service, and competitive pricing, forging lasting partnerships with our customers to support their success in every project.

At Laureola Industries, we're more than just a supplier—we are your partner in delivering quality and reliability. Whether your projects involve heavy-duty lifting, secure transportation, or intricate rigging setups, our comprehensive product line is designed to help you succeed in every task. Our new trucking and tie-down offerings complement our established wire rope and rigging solutions, ensuring we cover a broad spectrum of industrial needs.

We pride ourselves on offering competitive prices without compromising on quality, working closely with a trusted network of local and global manufacturers. This enables us to meet the demands of industries around the world while ensuring that your orders are delivered on time, every time.

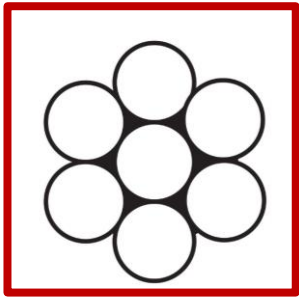
Looking to the future, **Our Vision** is to be recognized as a global leader in rigging, wire rope, and tie-down solutions. We strive to innovate, set industry standards, and ensure that quality, safety, and reliability are at the forefront of every operation. From small businesses to large-scale enterprises, Laureola Industries is committed to being your reliable partner in achieving success, now and into the future.





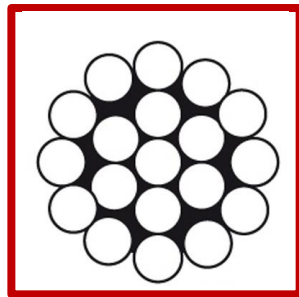
LAUREOLA INDUSTRIES

CONSTRUCTION



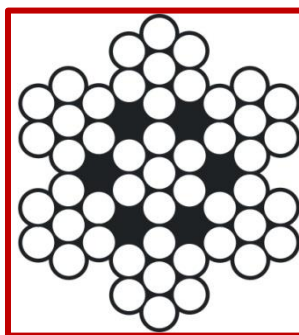
1x7

The 1x7 wire rope construction features one central wire surrounded by six outer wires, providing high strength and minimal stretch. This rigid structure is ideal for applications requiring maximum load-bearing capacity, such as guy wires and standing rigging. However, its limited flexibility makes it unsuitable for use in pulleys or applications involving frequent bending.



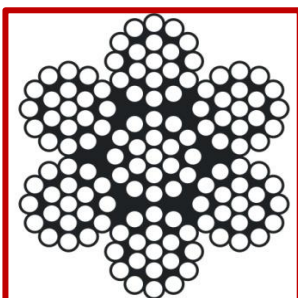
1x19

The 1x19 wire rope consists of a single strand made up of 19 individual wires, striking a balance between strength and flexibility. This construction allows for smoother operation over pulleys and improved fatigue resistance, making it suitable for marine applications, aircraft controls, and architectural projects where both strength and some flexibility are essential.



7x7

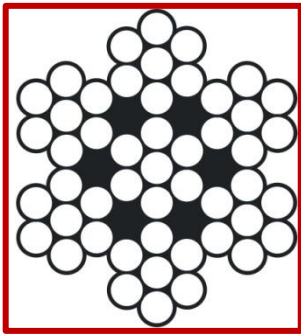
The 7x7 wire rope is made up of seven strands, each containing seven wires, offering medium flexibility and strength. This design enhances fatigue resistance and allows for smoother operation over pulleys. It is commonly used in light-duty hoisting, guardrails, and various industrial applications where a balance of strength and flexibility is required.



7x19

The 7x19 wire rope, known as "aircraft cable," consists of seven strands with 19 wires each. This construction provides excellent flexibility and durability, making it ideal for applications with frequent bending, such as aircraft control systems and rigging scenarios. Despite its flexibility, it maintains good strength characteristics, making it a versatile choice for various applications.



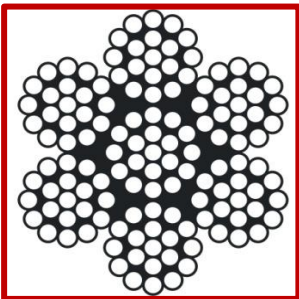


7x7

STAINLESS STEEL AIRCRAFT CABLE

GRADE 304

Stainless steel wire rope is a versatile and durable material composed of multiple strands of stainless steel wire twisted together to form a strong, flexible cable. It offers excellent corrosion resistance, particularly in marine and coastal environments, making it ideal for applications exposed to moisture and salt water.



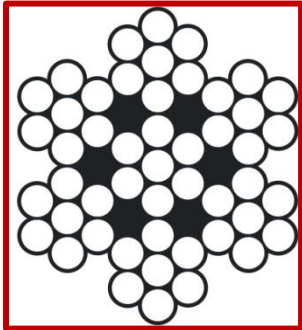
7x19

Stainless steel wire rope is available in various grades, with 304 and 316 being the most common. Grade 316 provides superior corrosion resistance due to its higher molybdenum content, while 304 offers a good balance of strength and corrosion resistance at a lower cost.

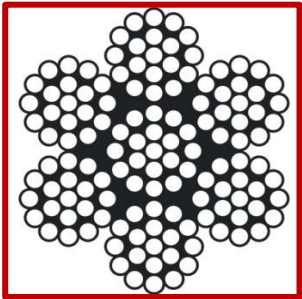
Size	Style Number	Construction	Weight/1000 ft (LBS)	Breaking Strength (LBS)
3/64"	364-SS304-77	7x7	4.2	270
1/16"	116-SS304-77	7x7	7.5	480
5/64"	564-SS304-77	7x7	11	650
3/32"	332-SS304-77	7x7	16	920
1/8"	018-SS304-77	7x7	28	1700
3/32"	332-SS304-719	7x19	18	1050
1/8"	018-SS304-719	7x19	29	2000
3/16"	316-SS304-719	7x19	65	4200

Reel available in stock: 100', 250', 500', 1000', 1500', 2500' and 5000'
Also available in Grade 316





7x7



7x19

GALVANIZED AIRCRAFT CABLE

Galvanized steel wire rope is a versatile and durable material composed of multiple strands of steel wire that have been coated with a protective layer of zinc through a process called galvanization. This zinc coating provides excellent corrosion resistance, significantly extending the rope's lifespan compared to uncoated steel wire rope. Galvanized wire rope offers a balance of strength, durability, and cost-effectiveness, making it suitable for a wide range of applications in various industries. While not as corrosion-resistant as stainless steel in marine environments, galvanized steel wire rope performs well in many outdoor settings and is commonly used in construction, agriculture, and industrial applications where strength and weather resistance are important.

Size	Style Number	Construction	Weight/1000 ft (LBS)	Breaking Strength (LBS)
1/16"	116-GAL-77	7x7	7	480
3/32"	332-GAL-77	7x7	16	920
1/8"	018-GAL-77	7x7	28	1700
3/16"	316-GAL-77	7x7	62	3700
3/32"	332-GAL-719	7x19	18	1050
1/8"	018-GAL-719	7x19	29	2000
3/16"	316-GAL-719	7x19	65	4200

Reel available in stock: 100', 250', 500', 1000', 1500', 2500' and 5000'





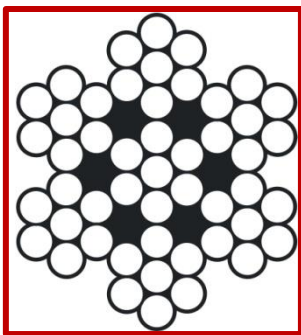
LAUREOLA INDUSTRIES

AIRCRAFT STEEL CABLE

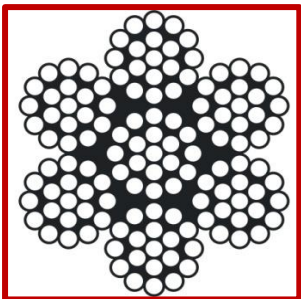


BLACK GALVANIZED STEEL CABLE

Black oxide cables are a specialized category of cables known for their distinctive appearance and enhanced durability. These cables undergo a surface treatment process called black oxidation, where a thin layer of black oxide forms on the surface of the cable through a chemical reaction.



7x7



7x19

Size	Style Number	Construction	Weight/1000ft (LBS)	Breaking Strength (LBS)
1/16"	116-BO-77	7x7	7.5	480
3/32"	332-BO-77	7x7	16	920
1/8"	018-BO-77	7x7	28	1700
3/32"	332-BO-719	7x19	16	1050
1/8"	018-BO-719	7x19	29	2000
3/16"	316-BO-719	7x19	65	4200

BLACK OXIDE GIVES CABLE A MATTE BLACK FINISH

Reel available in stock: 100', 250', 500', 1000'

Also available in Stainless steel

Note: Breaking Strength ratings are for comparison purpose only. Actual operating loads may vary, but should not exceed the recommended design factor of 20% of the product breaking strength.





COATED GALVANIZED AIRCRAFT CABLE – 7X7



Vinyl (PVC) Coated Cable

Vinyl-coated aircraft cables are designed for flexibility and protection in a variety of outdoor and general-purpose applications. The vinyl (PVC) coating offers excellent resistance to moisture, UV rays, and chemicals, making these cables ideal for use in marine rigging, cargo control, and recreational equipment. The flexible nature of the vinyl coating makes handling and installation easier, while providing dependable protection to the wire rope, ensuring durability in both indoor and outdoor environments.



Cable Diameter (in)	Coated Diameter (in)	Style Number	Colour	Weight/1000 ft (LBS)	Breaking Strength (LBS)
3/64	1/16	364116-77-GPB 364116-77-GPC	Black, Clear	6	270
1/16	3/32	116332-77-GP (color)	Black, Clear, Blue, Red, Yellow, Orange, Green, Brown	9.5	480
1/16	1/8	116018-77-GPB 116018-77-GPC	Black, Clear	10	480
3/32	1/8	332018-77-GP8 332018-77-GPC	Black, Clear	22	920
3/32	3/16	332316-77-GPB 332316-77-GPC	Black, Clear	29	920
1/8	3/16	018316-77-GPB 018316-77-GPC 018316-77-GPR	Black, Clear, Red	46.5	1700
3/16	1/4	316014-77-GPB 316014-77-GPC	Black, Clear	79	3700

Available in various colors!



Reel available in stock: 100', 250', 500', 1000', 1500', 2500' and 5000'



COATED GALVANIZED AIRCRAFT CABLE – 7X7

Nylon Coated Cable

Nylon-coated aircraft cables are engineered for high-performance in demanding, high-friction environments. The nylon coating delivers superior abrasion resistance, impact strength, and mechanical durability, making these cables suitable for industrial applications where constant movement or contact with surfaces is common. Nylon's resistance to wear, higher temperatures, and harsh chemicals ensures long-lasting performance, particularly in heavy-duty settings where traditional coatings may wear out quickly.



Nylon 6
Polyvinyl

Cable Diameter (in)	Coated Diameter (in)	Style Number	Colour	Weight/1000 ft (LBS)	Breaking Strength (LBS)
1/16	3/32	116332-77-GN6B	Black	9.5	480
		116332-77-GN6C	Clear		
1/16	1/8	116018-77-GN6B	Black	10	480
		116018-77-GN6C	Clear		
3/32	1/8	332018-77-GN6B	Black	22	920
		332018-77-GN6C	Clear		
3/32	3/16	332316-77-GN6C	Black	29	920
		332316-77-GN6C	Clear		
1/8	3/16	018316-77-GN6B	Black	46.5	1700
		018316-77-GN6C	Clear		
3/16	1/4	316014-77-GN6B	Black	79	3700
		316014-77-GN6C	Clear		

Available in
Black and
Clear colors!



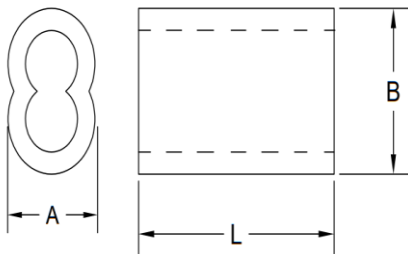
Reel available in stock: 100', 250', 500', 1000', 1500', 2500' and 5000'



ALUMINIUM SWAGE SLEEVES



ALUMINUM SWAGE SLEEVES



Size	Style Number	Dimensions (Inches)			Weight/100 pcs (LBS)
		L	A	B	
3/64"	364-ALSL	0.375	0.140	0.203	0.18
1/16"	116-ALSL	0.375	0.185	0.25	0.25
5/64"	564-ALSL	0.375	0.203	0.312	0.29
3/32"	332-ALSL	0.6	0.278	0.422	0.33
1/8"	018-ALSL	0.675	0.365	0.550	0.66
5/32"	532-ALSL	0.690	0.385	0.575	1.55
3/16"	316-ALSL	1.05	0.466	0.660	2.87
1/4"	014-ALSL	1.165	0.545	0.825	4.24
5/16"	516-ALSL	1.28	0.689	1.042	6.53
3/8"	038-ALSL	1.48	0.82	1.21	9.44

COPPER SWAGE SLEEVES



COPPER SWAGE SLEEVES

Size	Style Number	Dimensions (Inches)			Weight/100 pcs (LBS)
		L	A	B	
1/16"	116-CUSL	0.385	0.185	0.25	0.25
3/32"	332-CUSL	0.6	0.278	0.422	0.33
1/8"	018-CUSL	0.675	0.365	0.550	0.66
5/32"	532-CUSL	0.690	0.385	0.575	1.55
3/16"	316-CUSL	1.05	0.466	0.660	2.87
1/4"	014-CUSL	1.165	0.545	0.825	4.24
5/16"	516-CUSL	1.28	0.689	1.042	6.53
3/8"	038-CUSL	1.48	0.82	1.21	9.44



LAUREOLA INDUSTRIES

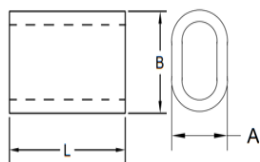
RIGGING HARDWARE



Aluminium Stop Swage Sleeves

ALUMINIUM STOP SWAGE SLEEVES

Size	Style Number	Dimensions (Inches)		Weight/100 pcs (LBS)
		A	B	
3/64"	364-ALRSL	0.173	0.163	0.04
1/16"	116-ALRSL	0.219	0.188	0.06
5/64"	564-ALRSL	0.344	0.313	0.22
3/32"	332-ALRSL	0.344	0.313	0.23
1/8"	018-ALRSL	0.344	0.313	0.25
5/32"	532-ALRSL	0.406	0.313	0.40
3/16"	316-ALRSL	0.438	0.313	0.40
1/4"	014-ALRSL	0.656	0.688	2.10
5/16"	516-ALRSL	0.688	0.688	3.59
3/8"	038-ALRSL	0.688	0.688	3.59



Oval Swage Sleeves

OVAL STAINLESS STEEL SWAGE SLEEVES

Size	Style Number	Dimensions			Weight/100 pcs (LBS)
		A	B	L	
1/16"	116-OVSL	0.175	0.250	0.375	0.2
3/32"	332-OVSL	0.250	0.360	0.484	0.3
1/8"	018-OVSL	0.340	0.485	0.625	0.4
5/32"	532-OVSL	0.390	0.560	0.750	1.4
3/16"	316-OVSL	0.455	0.660	0.875	2.3
1/4"	014-OVSL	0.540	0.810	1	4.4





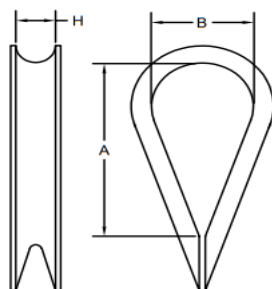
LAUREOLA INDUSTRIES

RIGGING HARDWARE



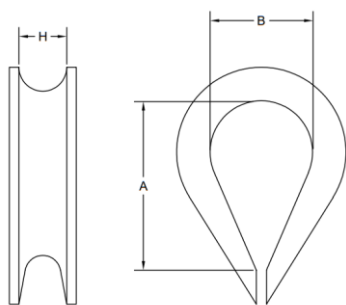
STAINLESS AN THIMBLES

GRADE 304



Size	Style Number	A	B	H	Weight/100 Pcs (LBS)
3/64 - 1/16 - 5/64	116-SSTAN	0.513	0.315	0.104	0.2
3/32 - 7/64 - 1/8	332-SSTAN	0.749	0.454	0.161	0.4
5/32	532-SSTAN	0.768	0.442	0.212	0.4
3/16	316-SSTAN	1	0.500	0.203	1
7/32 - 1/4	014-SSTAN	1.406	0.700	0.266	1.5
9/32 - 5/16	516-SSTAN	1.797	0.900	0.328	3.5
3/8	038-SSTAN	2	1.000	0.391	8.5

STAINLESS STEEL STANDARD WIRE ROPE THIMBLES



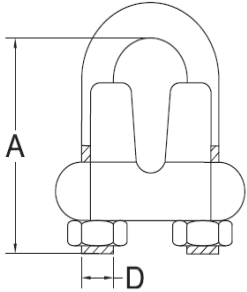
Size	Style Number	A	B	H	Weight/100Pcs (LBS)
1/8	018-SSTSD	0.749	0.454	0.161	0.6
3/16	316-SSTSD	0.827	0.512	0.236	1.4
1/4	014-SSTSD	1.063	0.591	0.276	2.4
5/16	516-SSTSD	1.496	0.866	0.354	5.6
3/8	038-SSTSD	1.614	0.945	0.394	7.3
1/2	012-SSTSD	2.080	1.142	0.551	13.9
5/8	058-SSTSD	2.638	1.574	0.709	27.6
3/4	034-SSTSD	3.150	1.968	0.866	58.8
7/8	078-SSTSD	3.543	2.205	0.945	62.5
1	111-SSTSD	4.724	2.953	1.181	73.5





LAUREOLA INDUSTRIES

RIGGING HARDWARE



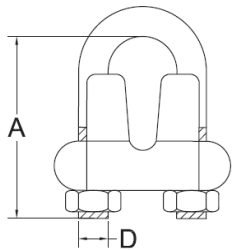
MALLEABLE WIRE ROPE CLIP



MALLEABLE
WIRE ROPE
CLIP

Size	Style Number	Minimum Clips Required	A	D	Weight/100 PCS (LBS)
1/16"	116-WRCM-100	3	0.630	8 - 32	2.25
3/32"	332-WRCM-100	3	0.780	10 - 24	3.60
1/8"	018-WRCM-100	3	0.780	10 - 24	4.25
3/16"	316-WRCM-100	3	0.875	10 - 24	7.60

Packaging: 100 pcs or Bulk 1000 pcs per carton



STAINLESS STEEL WIRE ROPE CLIP

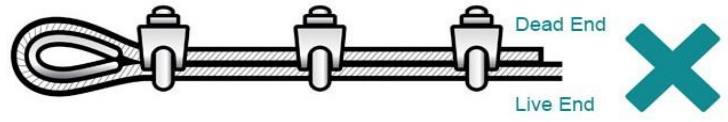
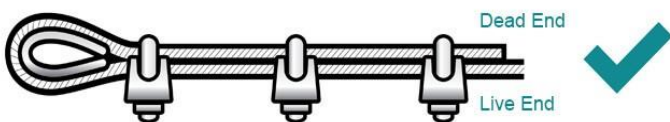
GRADE 304



STAINLESS
STEEL WIRE
ROPE CLIP

Size	Style Number	Minimum Clips Required	A	D	Weight/PC (LBS)
1/16"	116-WRCSS-100	3	0.602	0.113	0.02
3/32"	332-WRCSS-100	3	0.650	0.146	0.03
1/8"	018-WRCSS-100	3	0.830	0.195	0.04
3/16"	316-WRCSS-100	3	0.945	0.235	0.08

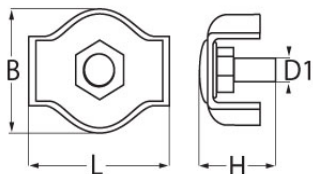
Comply with the manufacturer's specifications. The correct number of clips must be installed and tightened with the correct torque according to the installation technique shown below.





LAUREOLA INDUSTRIES

RIGGING HARDWARE

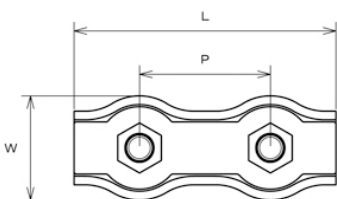


Simplex Wire
Rope Clip

SIMPLEX WIRE ROPE CLIP

GRADE 304

Size	Style Number	Dimensions (inches)			Weight/PC (LBS)
		B	L	H	
1/16"	116-SWRC	0.46	0.60	0.50	0.011
3/32"	332-SWRC	0.57	0.67	0.50	0.013
1/8"	018-SWRC	0.70	0.80	0.74	0.024



Duplex Wire
Rope Clip

DUPLEX WIRE ROPE CLIP

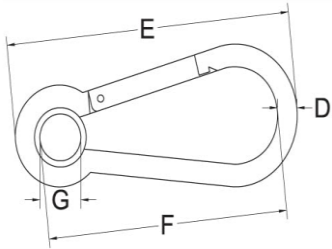
GRADE 304

Size	Style Number	Dimensions (inches)			Weight/PC (LBS)
		W	P	L	
1/16"	116-DWRC	0.46	0.58	1.18	0.022
3/32"	332-DWRC	0.57	0.67	1.34	0.027
1/8"	018-DWRC	0.70	0.79	1.58	0.049



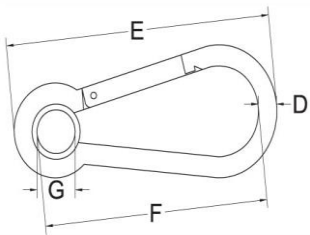


STAINLESS STEEL SNAP HOOKS WITH EYE



Style Number	Size	Weight LBS	Dimensions INCHES				
			D		E	F	G
			IN	MM			
341-shebm-316	3/16"	0.04	3/16	5	2	1.625	0.3125
341-shebm-516	5/16"	0.15	5/16	8	3.125	2.5	0.375

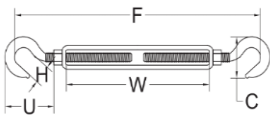
ZINC PLATED SNAP HOOKS WITH EYE



Style Number	Size	Weight LBS	Dimensions INCHES				
			D		E	F	G
			IN	MM			
516-SHEBM	5/16"	0.15	5/16	8	3.15	2.449	0.315



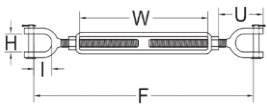
GALVANIZED TURNBUCKLE HOOK & HOOK



Style Number	Thread Dia X Take-up (IN)	Working Load Limit (LBS)	Weight Each (LBS)	Dimensions (IN)					
				C	F Open	F Closed	H	U Closed	W
THHG-516412	5/16 X 4 1/2	700	0.45	1.50	12.81	8.31	0.50	1.94	4.50



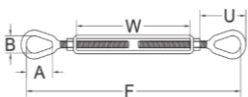
GALVANIZED TURNBUCKLE JAW & JAW



Style Number	Thread Dia X Take-up (IN)	Working Load Limit (LBS)	Weight Each (LBS)	Dimensions (IN)					
				I	F Open	F Closed	H	U Closed	W
TJJG-516412	5/16 x 4 1/2	800	0.52	0.87	12.36	8.36	0.50	1.98	4.50



GALVANIZED TURNBUCKLE EYE & EYE



Style Number	Thread Dia X Take-up (IN)	Working Load Limit (LBS)	Weight Each (LBS)	Dimensions (IN)					
				A	F Open	F Closed	B	U Closed	W
TEEG-516412	5/16 x 4 1/2	800	0.45	0.94	13.56	9.06	0.44	2.09	4.50

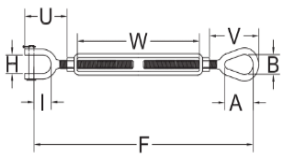


LAUREOLA INDUSTRIES

RIGGING HARDWARE

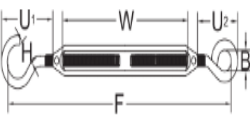


GALVANIZED TURNBUCKLE JAW & EYE



Style Number		Thread Dia X Take-up (IN)		Working Load Limit (LBS)			Weight Each (LBS)	
TJEG-516412		5/16 x 4 1/2		800			0.5	
Dimensions (IN)								
A	B	F Open	F Closed	H	I	U Closed	V Closed	W
0.94	0.44	13.71	8.71	0.5	0.8 7	1.98	2.09	4.50

ZINC PLATED TURNBUCKLE HOOK & EYE



Style Number	Thread Dia X Take-up (IN)	Working Load Limit (LBS)	Weight Each (LBS)	Dimensions (IN)					
				B	F Closed	U1 Closed	H	U2 Closed	W
THEZ-516258	5/16 x 2 5/8	150	0.25	0.425	5.75	0.445	0.445	1.3	2.65





LIGHTING SAFETY CABLE



- ❖ Safety Cable with Carabiner prevent hazard, especially when lights are hung overhead on a pipe or grid.
- ❖ Includes a carabiner to safety hook onto any fixture
- ❖ Designed to support temporary load.

These Safety cable with Carabiner has a 5/16" carabiner clip on one end and a loop on the other. Safety cable provides an extra layer of safety and prevents objects from falling in the event that a clamp should fail or is improperly tightened.

Laureola promises to make safety as No.1 priority.



Specifications		Size	Style Number	Breaking Strength (LBS)	Package Weight (LBS/10pcs)
Material	Galvanised Steel (Uncoated)				
Diameter	1/8" (3.17mm)				
Color	Silver or Black				
Length	20"(including Carabiner) 18" (Cable length)	18"	018-SC-BK-18	60 lbs (25kgs)	7.5
	33"(including Carabiner) 30" (Cable length)	30"	018-SC-BK-30	60 lbs (25kgs)	16
Breaking Strength (LBS)	60 lbs (25kgs)	18"	018-SC-SV-18	60 lbs (25kgs)	28
		30"	018-SC-SV-30	60 lbs (25kgs)	18



LAUREOLA INDUSTRIES

TRUCKING

AND

TIE-DOWN



Contact Us



@laureolaindustries
sales@laureolaindustries.com
+1-877-335-7779










LAUREOLA INDUSTRIES

POLYESTER

ROUND SLING

- ❖ The most flexible sling available.
- ❖ The sling conforms to the load extremely well, and provides the best choker hold.
- ❖ Hook and load contact points can be continually rotated to extend the service lift of the sling.
- ❖ Longer life means cost reduction in sling purchases.
- ❖ The load bearing fiber never comes into contact with the load.
- ❖ Protection to the load from sling damage.
- ❖ Seamless cover, no edge to wear out.
- ❖ Wide variety of sling lengths and load capacities.
- ❖ Adapts to all types, sizes, and load
- ❖ Light weight, easy to rig, store, and clean.
- ❖ Excellent resistance to ultraviolet light, rot, and mild.
- ❖ No loss of strength in water.
- ❖ Only 3% elongation. Maximum temperature exposure 194°F
- ❖ No metal parts on the sling, will not rust.

Color	Style Number	Length (feet)	Diameter (inches)	Working Load Limit (WLL)						
				Vertical (lbs)	Choker (lbs)	Basket (lbs)				Weight (lbs/ft)
						90°	60°	45°	30°	
	PRS030-PUR	4', 10'	0.75	3000	2400	6000	5100	4200	3000	0.25
	PRS060-GRE	4', 10'	0.90	6000	4800	12000	10300	8400	6000	0.40
	PRS090-YEL	4', 10'	1.25	9000	7200	18000	15500	12600	9000	0.50
	PRS140-RED	6', 10'	1.30	14000	11200	28000	24100	19600	14000	0.85
	PRS230-BLU	6', 10'	1.65	23000	18400	46000	39500	32300	23000	1.25









WARNING

The maximum loads shown are applicable only for new products or in perfect condition.
Do not exceed maximum rated capacities





Style Number	Length (feet)	Width (inches)	Working Load Limit (WLL)						
			Vertical (lbs)	Choker (lbs)	Basket (lbs)				Safety Factor
					90°	60°	45°	30°	
									
PWS-BE-02	4', 10'	2	6200	4960	12400	10700	8700	6200	5:1



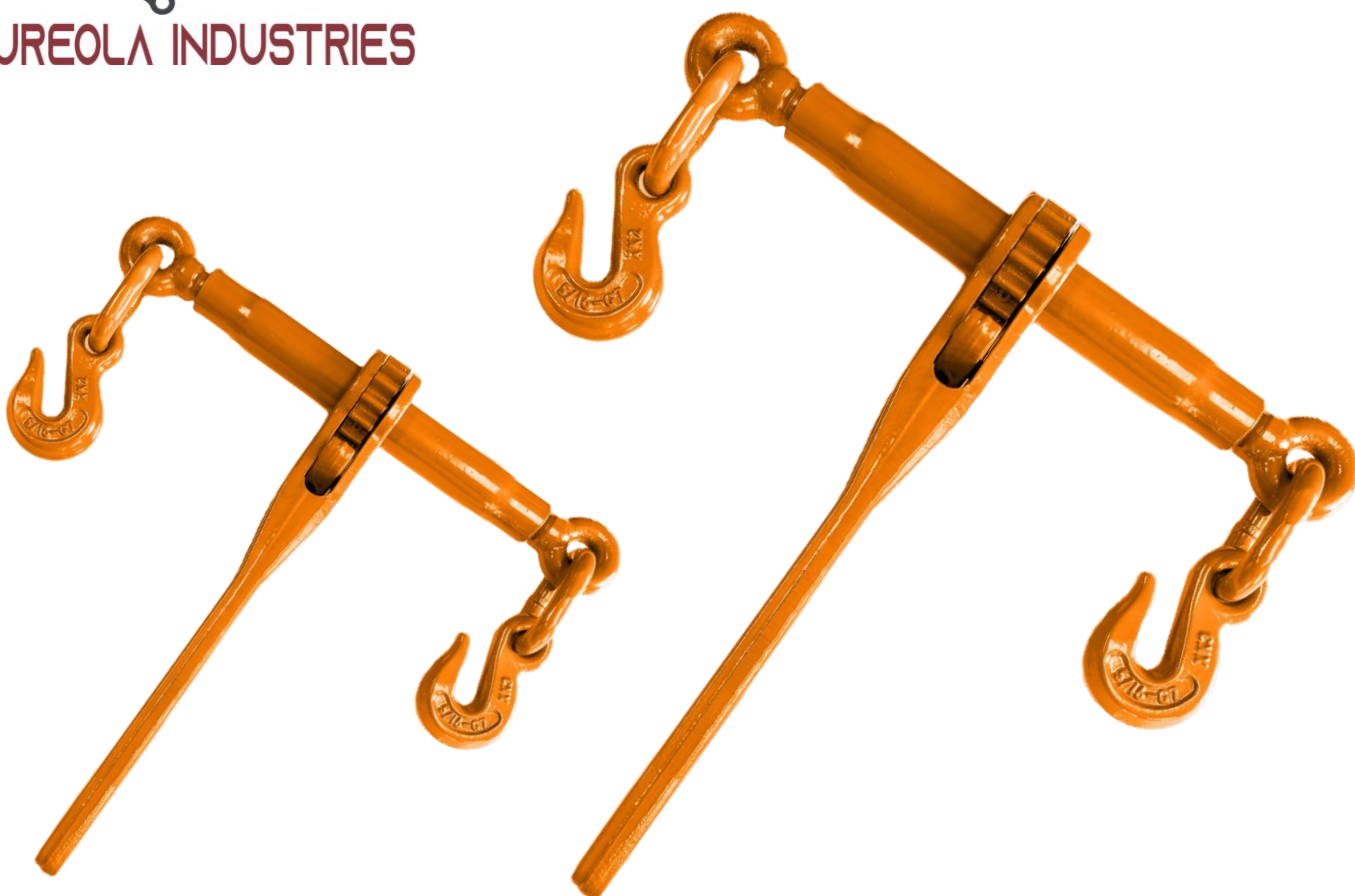
WARNING

The maximum loads shown are applicable only for new products or in perfect condition.
Do not exceed maximum rated capacities



LAUREOLA INDUSTRIES

LOAD BINDERS



Style Number	Colour	Product Type	Chain Size (IN)	Capacity (LBS)	Weight (LBS)
LBR-OR-516-038	Orange	Ratchet	5/16 (G43-G70) 3/8 (G43)	5400	10.8
LBR-OR-038-012	Orange	Ratchet	3/8 (G43-G70) 1/2 (G43)	9200	12.75



The maximum loads shown are applicable only for new products or in perfect condition.
Do not exceed maximum rated capacities.





LAUREOLA INDUSTRIES

TIE-DOWN CHAINS



Style Number	Diameter (IN)	Grade	Working Load Limit (WLL) (LBS)	Length (feet)	Weight (LBS)
TDC-G70-516	5/16"	70	4700	16', 20'	16, 20
TDC-G70-038	3/8"	70	6600	10', 16', 14'	15, 24, 30
TDC-G70-012	1/2"	70	11300	14', 16', 20'	32, 37, 46



WARNING

The maximum loads shown are applicable only for new products or in perfect condition.
Do not exceed maximum rated capacities.

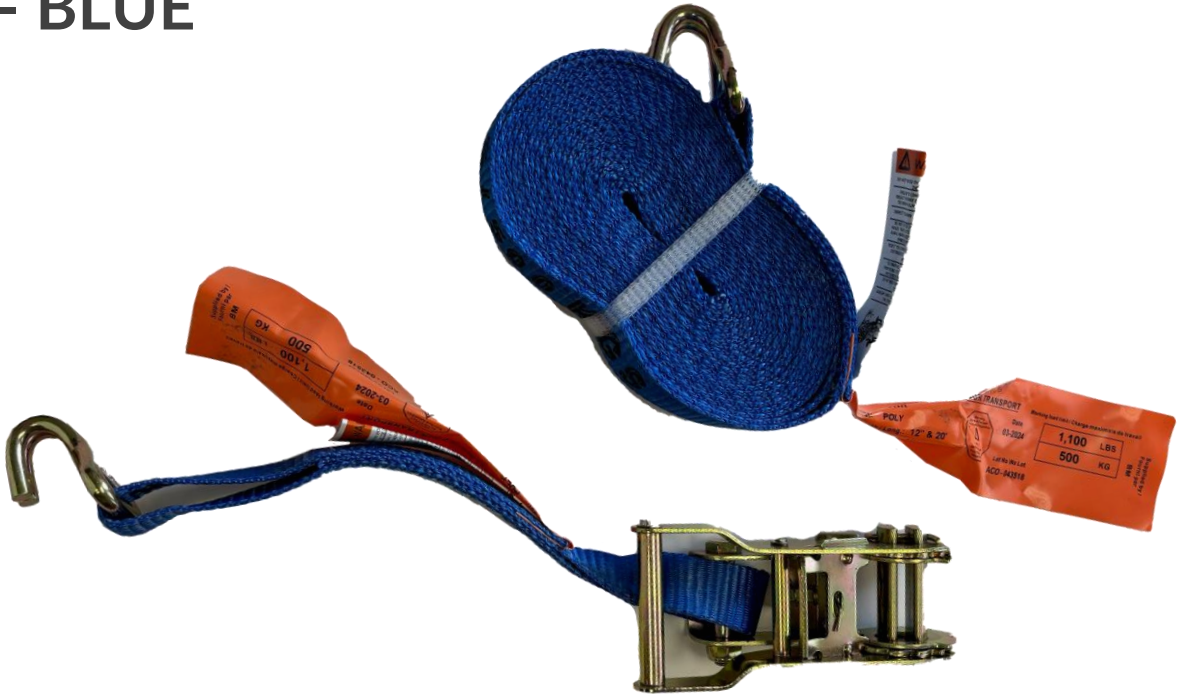




LAUREOLA INDUSTRIES

RATCHET STRAPS

1" - BLUE



Style Number	Width (IN)	Length	Working Load Limit (WLL) (LBS)	Type	End Hardware
RSWH1-BL	1	12', 16', 20'	1100	Ratchet Strap	Wire Hook



The maximum loads shown are applicable only for new products or in perfect condition.
Do not exceed maximum rated capacities.





LAUREOLA INDUSTRIES

RATCHET STRAPS

2" – YELLOW



Style Number	Width (IN)	Length	Working Load Limit (WLL) (LBS)	Type	End Hardware
RSWH2-27-YL	2	27	3335	Ratchet Strap	Wire Hook



WARNING

The maximum loads shown are applicable only for new products or in perfect condition.
Do not exceed maximum rated capacities





LAUREOLA INDUSTRIES

CONTACT US

At Laureola Industries, we are committed to providing exceptional service and support. Whether you have questions about our products, need assistance with an order, or are looking for a custom solution, we're here to help.

Reach us at:

E-mail: sales@laureolaindustries.com

Phones: 1-(877) 335-7779

Website: www.laureolaindustries.com

Our team is ready to assist you with any inquiries regarding our extensive product line, including Wire Ropes, Rigging Hardware, Trucking & Tie-Down Solutions, and more.

Business Hours:

Monday - Friday: 9:00 AM - 5:00 PM (EST)

Join Our Community!



@laureolaindustries

